



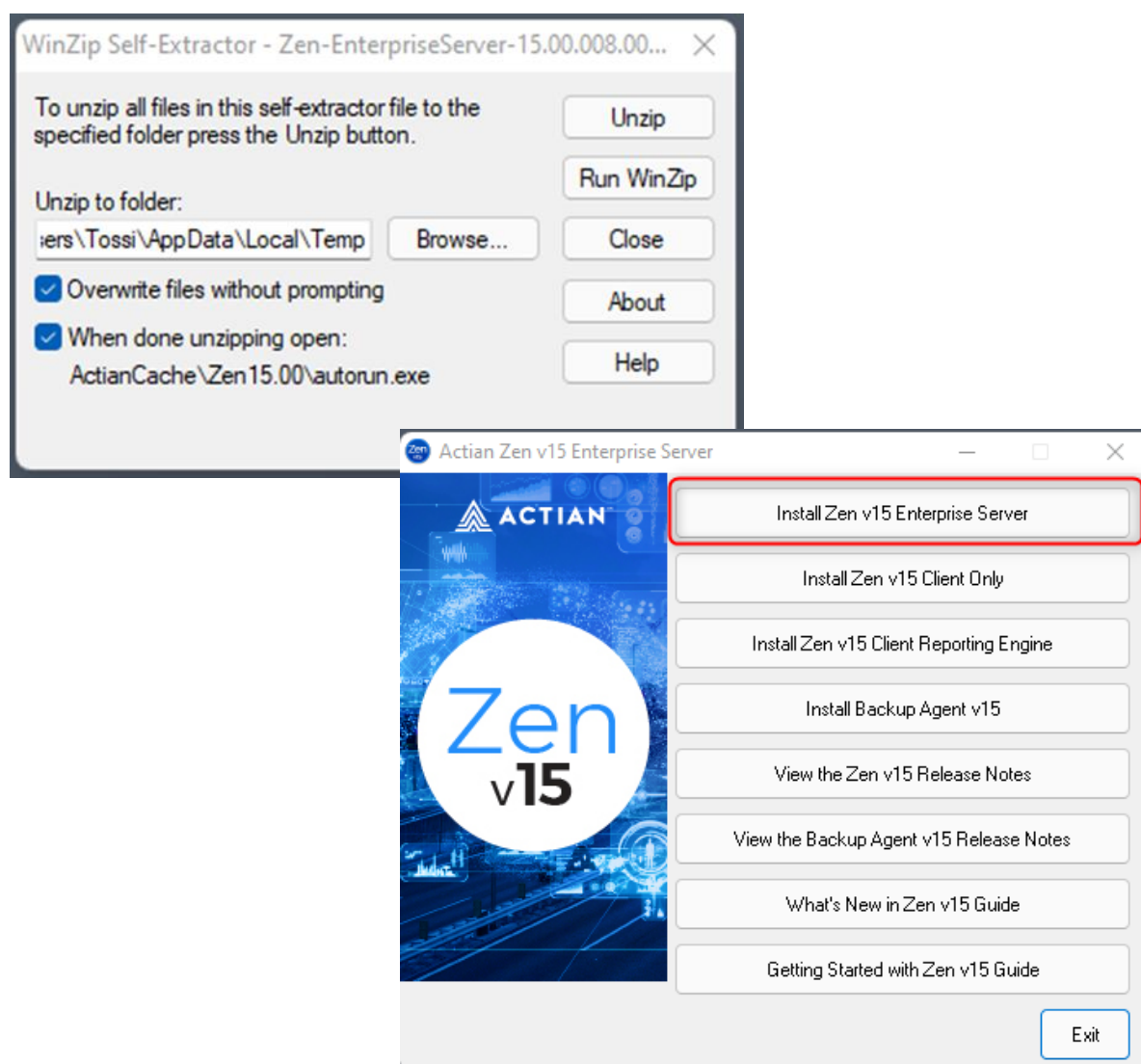
SoftENGINE

Action
PSQL

Datenbank ZEN v15 OEM für BüroWARE und WebWARE

ZEN v15 ist die aktuelle Datenbank für die SoftENGINE Produktlinien BüroWARE und WebWARE. ZEN v15 ist über Distribution² GmbH als OEM-Produkt lieferbar. Für den Erwerb / Miete der OEM-Lizenzen muss der Nutzer einen Nachweis über die Lizenzierung der SoftENGINE-Produkte erbringen.

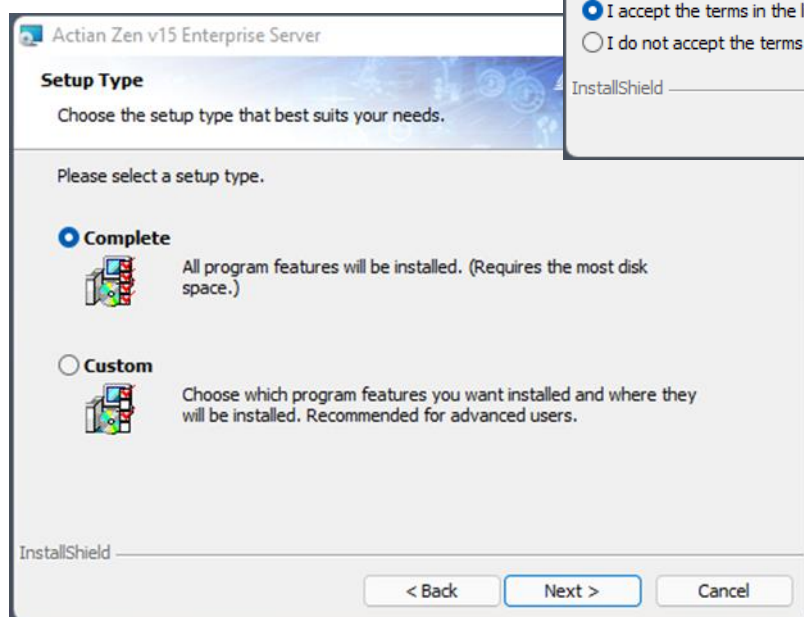
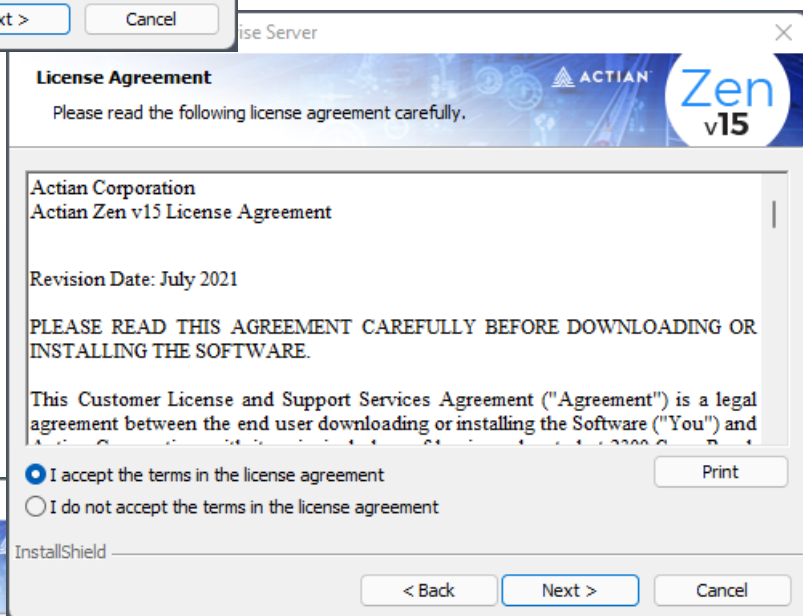
Installation Actian Zen v15 Server





SoftENGINE

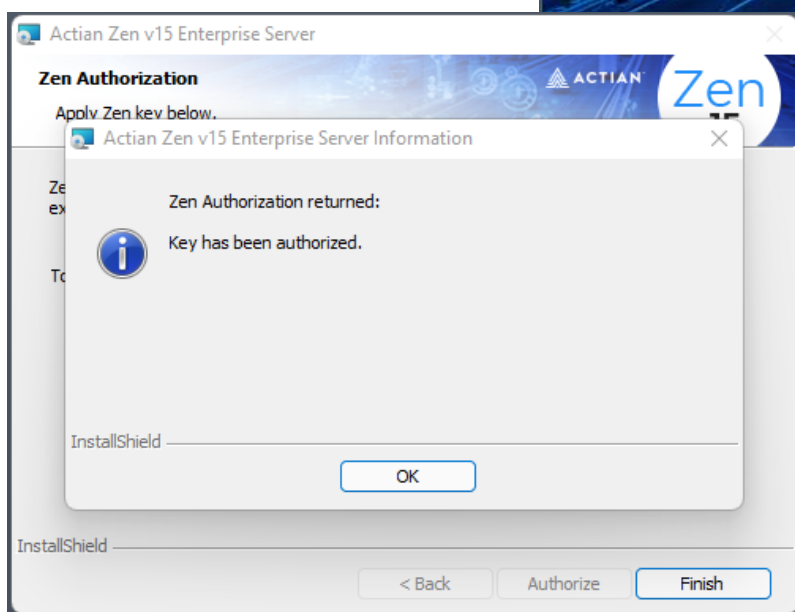
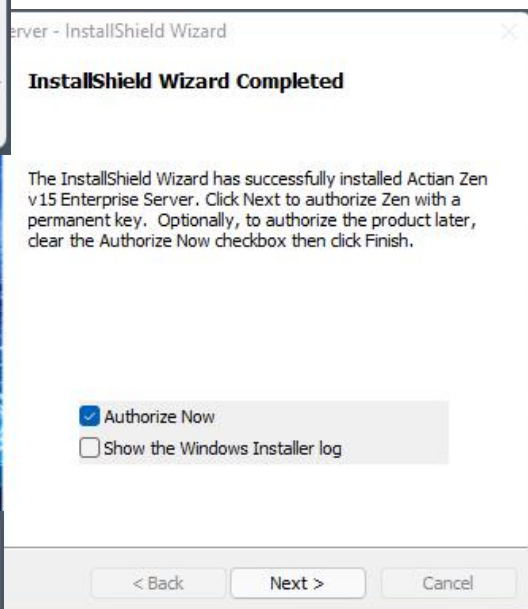
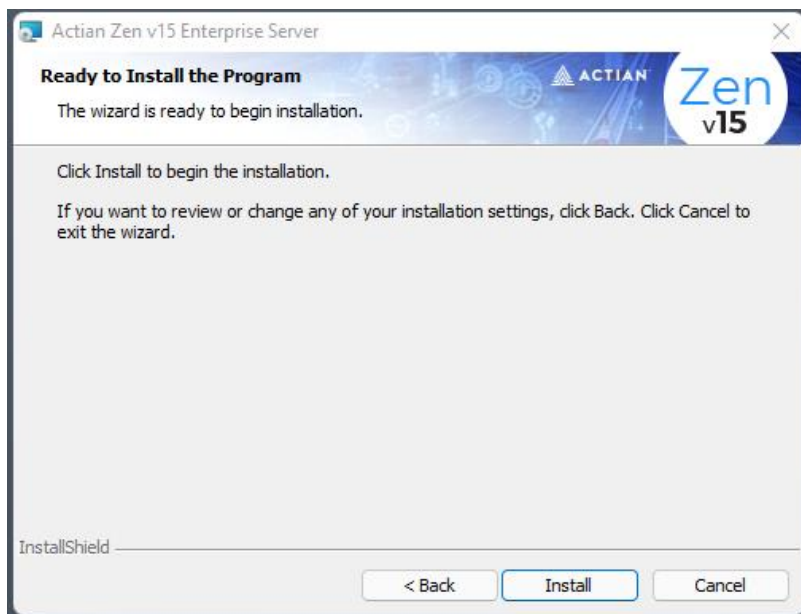
Action
PSQL





SoftENGINE

Action[™]
PSQL





SoftENGINE

Action[™]
PSQL

The screenshot displays the Actian Zen 15 software interface. On the left, a file explorer shows the 'Actian Zen 15' folder with sub-items: 'Zen Control Center & Documentation', 'Zen DDF Builder', 'Zen Defragmenter', 'Zen Function Executor', 'Zen License Administrator', and 'Zen Log'. The 'Zen Control Center & Documentation' item is highlighted with a red box.

The 'Zen Control Center' application window is open, showing a 'Welcome to the Zen Control Center' message and a 'Common Tasks' section. A context menu is open over the 'Engines' folder in the left pane, with the 'Properties' option highlighted by a red box.

The 'Properties for Landsberg' dialog box is open, showing the 'Performance tuning' tab. The 'File Close Delay' setting is highlighted with a red box and set to '0'. Other settings include 'Limit Segment Size to 2GB' (checked), 'Automatic Defragmentation' (unchecked), 'Communications Threads' (16), 'Cache Allocation Size in MB' (13092), 'Transaction Log Buffer Size in byte(s)' (33554432), 'Number of Input/Output Threads' (32), 'Transaction Log Size in byte(s)' (67108864), 'Max MicroKernel Memory Usage' (60), and 'File Growth Factor' (15). The 'OK' button is highlighted with a red box.

Leitfaden Pervasive PSQL / Actian ZEN

<https://wiki.softengine.de/7555/>